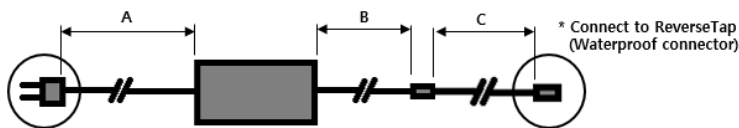
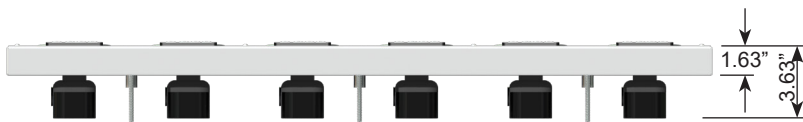
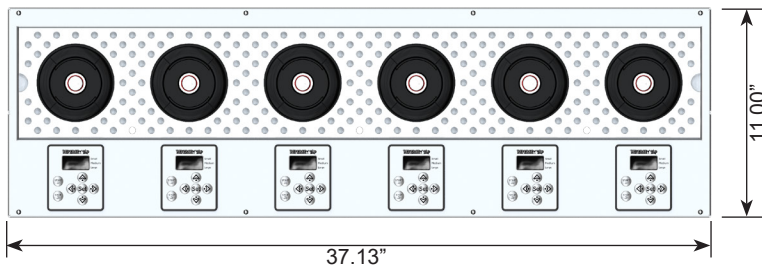
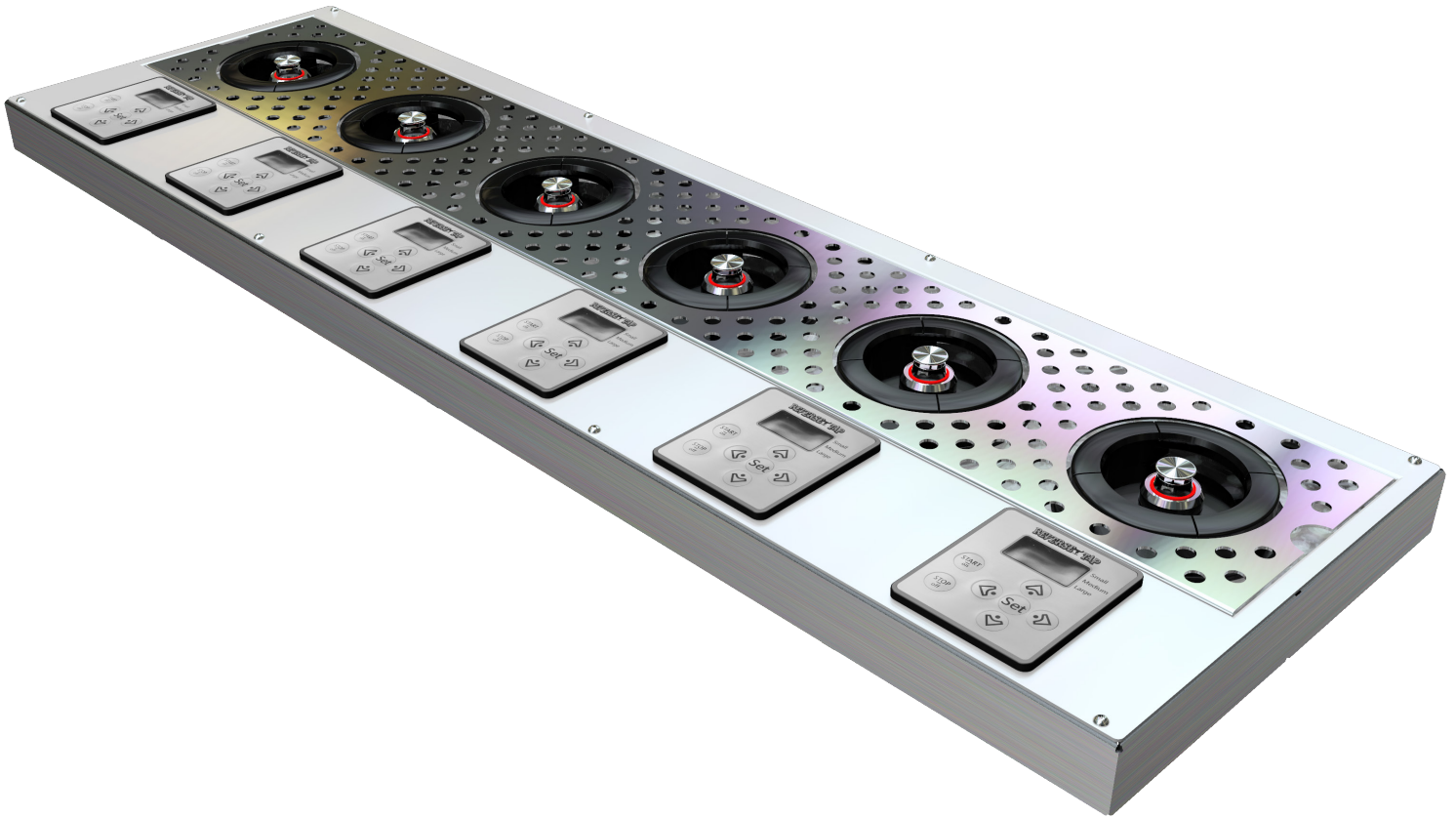


# RT6 LOW PROFILE REVERSE TAP DISPENSER



\* May vary by the voltage standards.

## Low Profile Specifications

Item No.	GSE-RT6-LP
Nozzle Qty	6
Dimensions	37.13" x 11.00" x 3.63"
Weight	30 lbs.
Material/Finish	Brushed Stainless-Steel
Beer Line Input ID	5/16"
Glycol Lines Input ID	3/8"
Power Supply Input	100-240V / 50-60Hz
Power Supply Output	24V, 3.75A
Plug Type	NEMA 5-15
Cord Length	A: 71", B: 59", C: 59"
Components	Flow Meters, Drain Hoses, Fittings, (2) Power Supplies